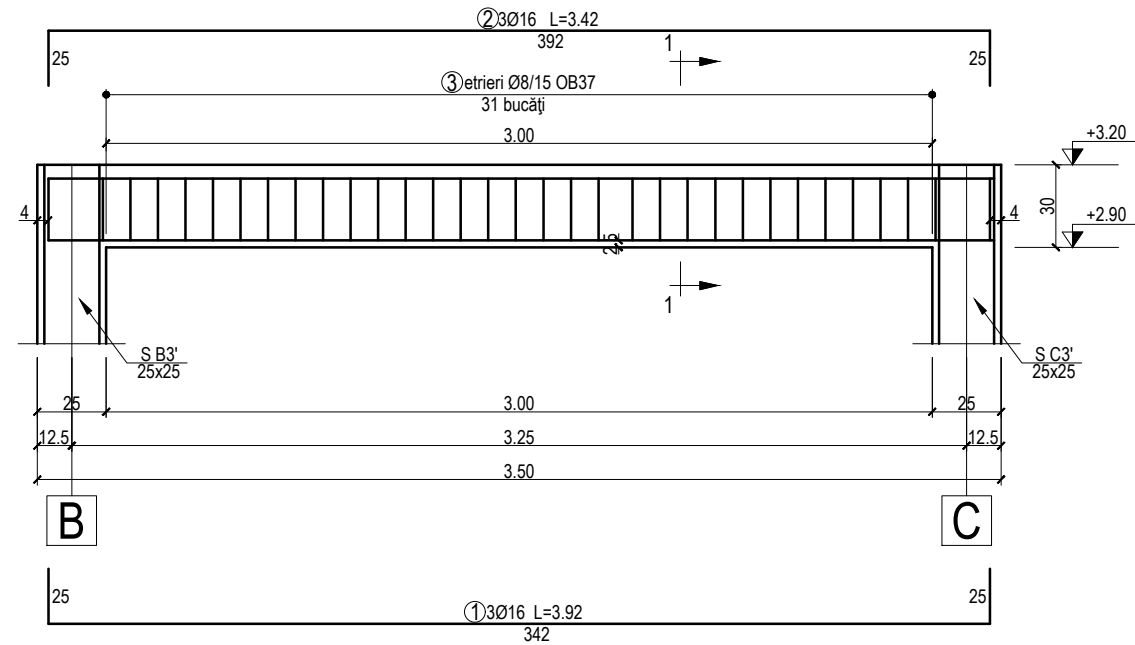


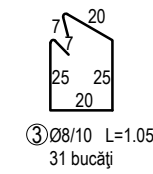
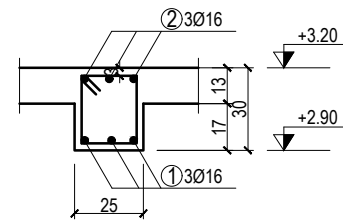
Armare grinda 250x300 mm - GP3'

Scara 1:25



Secțiune 1-1

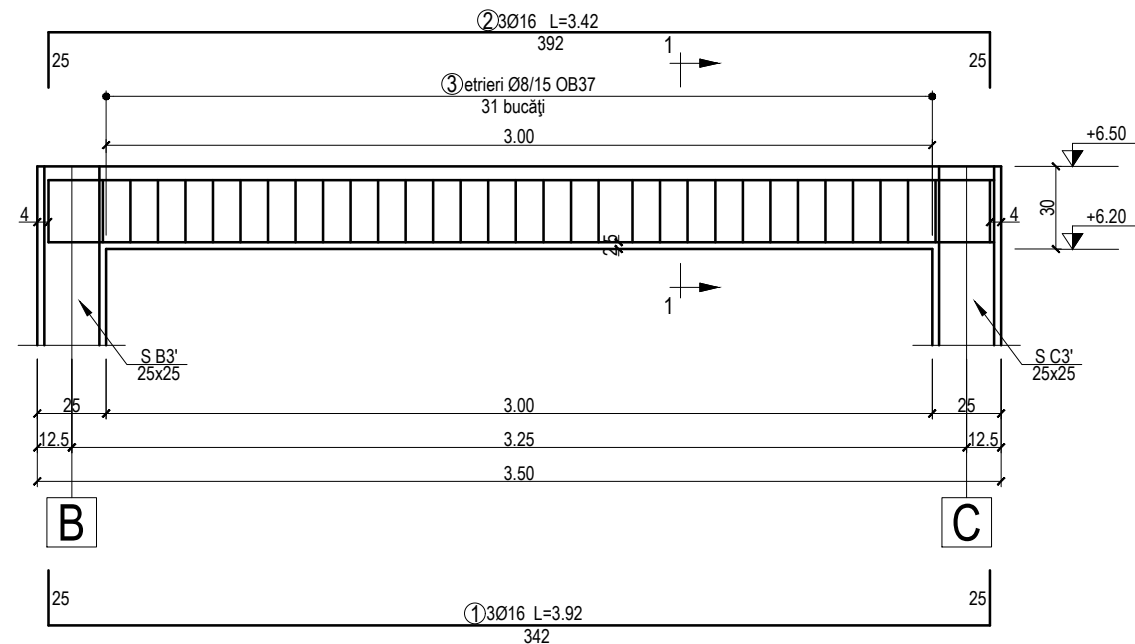
Scara 1:25



Extras de armatură				Plansa R-12		
Element	Marca	Diametru [mm]	Nr. bare	Lungimea unei bare [m]	Lungimi [m/Ø]	
					Ø8	Ø16
Armare grinda 25x35	1	16	3	3.92		11.76
	2	16	3	3.92		11.76
	3	8	31	1.05	32.55	23.52
Lungimi pe diametru [m]					32.55	23.52
Masa pe diametru [kg]					0.395	1.58
Masa pe diametru [kg]					13	37
<b>MASA TOTALA [kg]</b>					<b>50</b>	

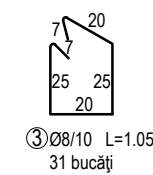
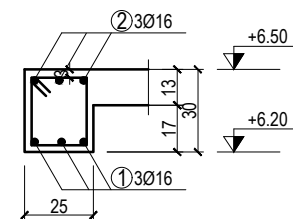
Armare grinda 250x300 mm - GE3'

Scara 1:25



Secțiune 1-1

Scara 1:25



Extras de armatură				Plansa R-12		
Element	Marca	Diametru [mm]	Nr. bare	Lungimea unei bare [m]	Lungimi [m/Ø]	
					Ø8	Ø16
Armare grinda 25x35	1	16	3	3.92		11.76
	2	16	3	3.92		11.76
	3	8	31	1.05	32.55	23.52
Lungimi pe diametru [m]					32.55	23.52
Masa pe diametru [kg]					0.395	1.58
Masa pe diametru [kg]					13	37
<b>MASA TOTALA [kg]</b>					<b>50</b>	

**BETON SUPRASTRUCTURA:**  
 - C 16/20 - X0/XC1 - Cl 0,20  
 - 0...16 - A/C 0.65 - S3 - CEM I A 32.5  
 - Aditiv plastifiant max. 50gr/kg ciment  
 - Conform SR EN 206-1  
**ARMATURA:**  
 - OB 37 (S 235)  
 - PC 52 (S 355)  
 - Conform SR EN 1992-1

Verificator	dr. ing. Secula Silviu	Cerinta A1	
ARHITEKT STUDIO A srl TIMISOARA str. dr. Nicolae Paulescu nr.1.ap. 20 J35/3200/1994		PROIECT: Construire corp de cladire cu birouri Primaria Vladimirescu AMPLASAMENT: loc. VLADIMIRESCU, jud. ARAD BENEFICIARI: PRIMARIA COMUNEI VLADIMIRESCU	Nr. proiect 33 05/ 2017
sef proiect	arh. IONASIU ADRIAN FLORIN	scara	OBIECT: Construire corp de cladire cu birouri Primaria Vladimirescu
proiectat	ing. MOSINCAT VASILE TUDOR	1 / :25	
desenat	ing. MOSINCAT VASILE TUDOR	data	PLANSA: ARMARE GRINZI GP3', GE3'
verificat	arh. IONASIU ADRIAN FLORIN	05/2017	plansa nr. R-12